

APPENDIX 4

Response to Gambling consultation 2021

Public Health - Gambling Local Area Profile –additional information for inclusion into Local Area Profile document.

Under 9.7 Gambling Operations

- In relation to tablets - licensees should ensure that there is sufficient floorspace in the premises to permit counted tablets to be used simultaneously.
- This should be mentioned as applicants usually do not state the number of all bingo tablets in the premises including the ones hidden away to increase the number of B3 machines they are entitled to permit on the premises
- Mention the design details of the premises frontage including display information on the digital screens which could potentially attract children and young people

Under 11. Health

- Section on Children and Young People
There are 56,718 children in Haringey aged 0-17 years, representing 21% of the population. Statistics for the Gambling Commission contained within the NatCen “Gambling behaviour in Great Britain” show overall, the highest participation rates in any form of gambling activity were among adults aged between 25 and 64 (between 60% and 62%), while the lowest rates were found among the youngest and oldest age groups; 46% of 16 to 24 year olds and 47% of those aged 75 and over had gambled in the past year.
<https://www.gamblingcommission.gov.uk/PDF/survey-data/Gambling-behaviour-in-Great-Britain-2016.pdf>
- figures in 2017 show that a further 25,000 young people aged 11-16 are also rated as being “problem gamblers” with 40,000 “at risk”. Source: Gambling Commission (2017). Young people and gambling 2017: A research study among 11-16 year olds in Great Britain
- A UK study (2017) shows 4% of suicides of 20-24 year olds in the UK are gambling related¹.

Under 11.1 Mental Health

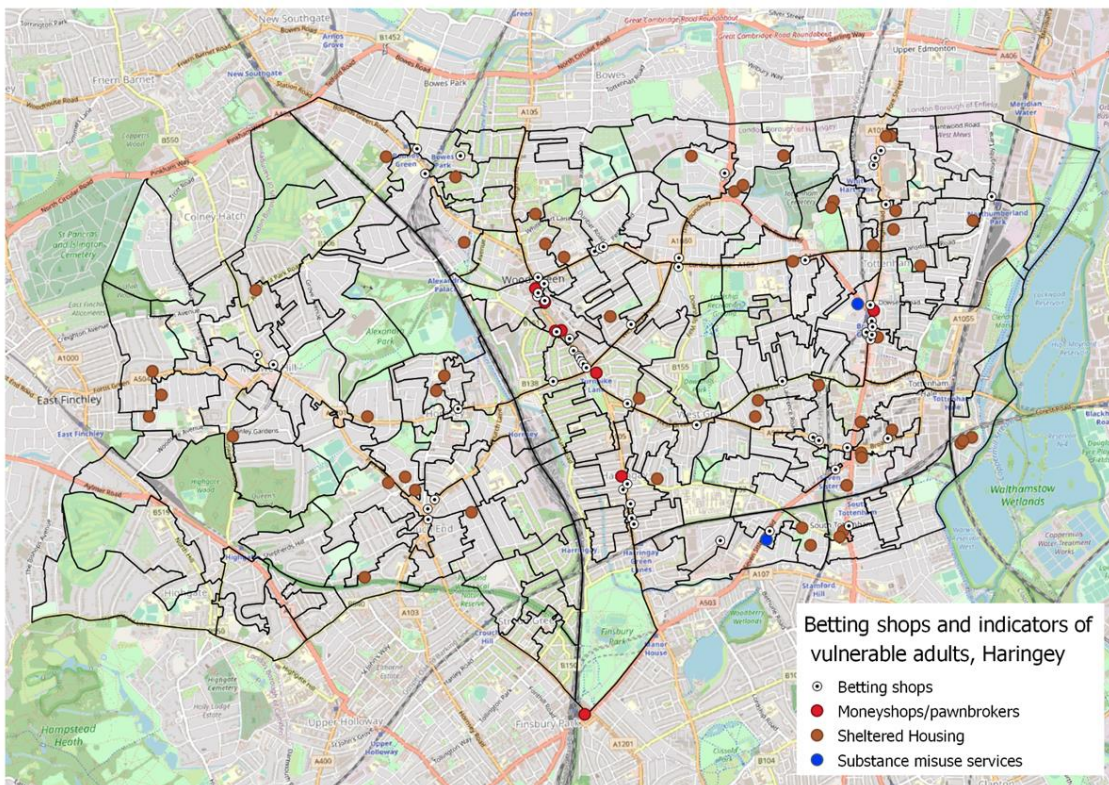
- Information on the link between gambling and suicide prevention
- The Suicide Prevention National Strategy identifies people with gambling addiction need a tailored approach to their mental health and it is necessary if their suicide risk is to be reduced.
- Gambling addicts are 2-3 times more likely to attempt to kill themselves or have major depressive episodes than other types of addicts, with 12-18% of those seeking treatment having attempted suicide.
- Source:
 - o Petry, N. & Kiluk, B. (2002) Suicidal ideation and suicide attempts in treatment-seeking pathological gamblers. The Journal of nervous and mental disease 190, 462.

¹ Appleby, L. et al. (2017). Suicide by children and young people. National Confidential Inquiry into Suicide and Homicide by People with Mental Illness (NCISH). Manchester: University of Manchester.

- National Council on Problem Gambling (2012) How Gambling Can Kill You Faster Than Drug Abuse or Alcoholism, <https://www.alternet.org/how-gambling-can-kill-you-faster-drug-abuse-or-alcoholism>
- Georgia State University. Depression, Suicide and Problem Gambling. http://www2.gsu.edu/~psyjge/Fact/suicide_04_10.pdf
- Kausch, O. (2003) Suicide attempts among veterans seeking treatment for pathological gambling. The Journal of clinical psychiatry
- In Haringey, it is estimated that 9.9% of children and young people aged 5 – 16 years have mental health disorders, and 22.3% of those aged 16 years and over have common mental disorders (13). In 2018, there were 22,752 adults diagnosed with depression, anxiety or both registered with Haringey GP practices in 2018.
- Within Haringey, the distribution of mental health illness is unequal; for example, 3% of people of Black or Black British ethnicity have a diagnosis of serious mental illness, higher than other ethnic groups. People in BME ethnic groups and people in the LGBT community are more likely to be diagnosed with a psychotic disorder. Those living in deprived areas are more likely to be affected by depression.
 - Source: Haringey JSNA: Focus on Adult Mental Health. April 2019.

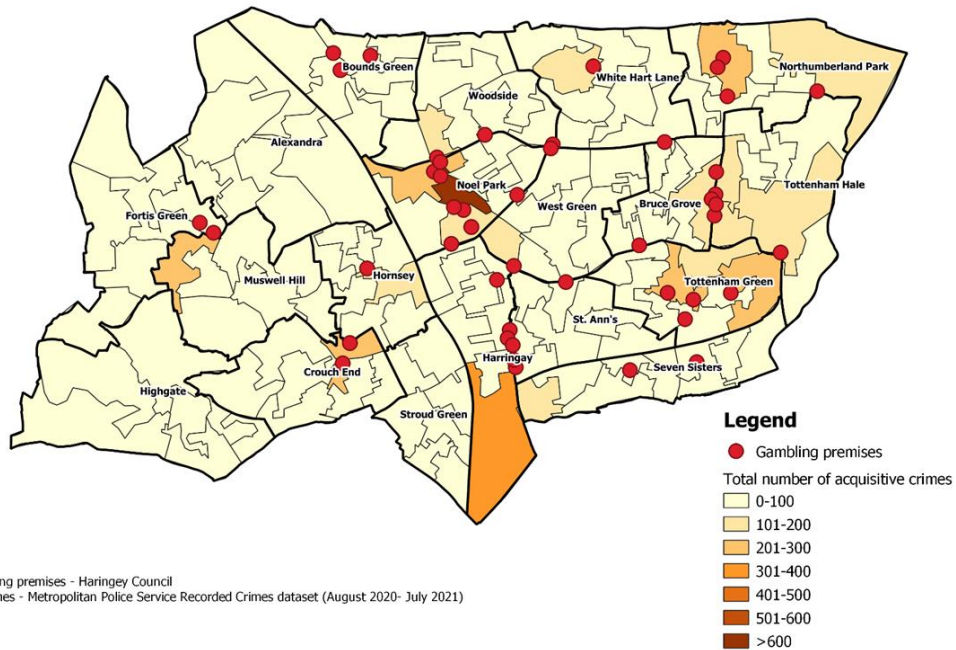
Maps

1. Locations linked to Vulnerable Adults to Gambling Premises



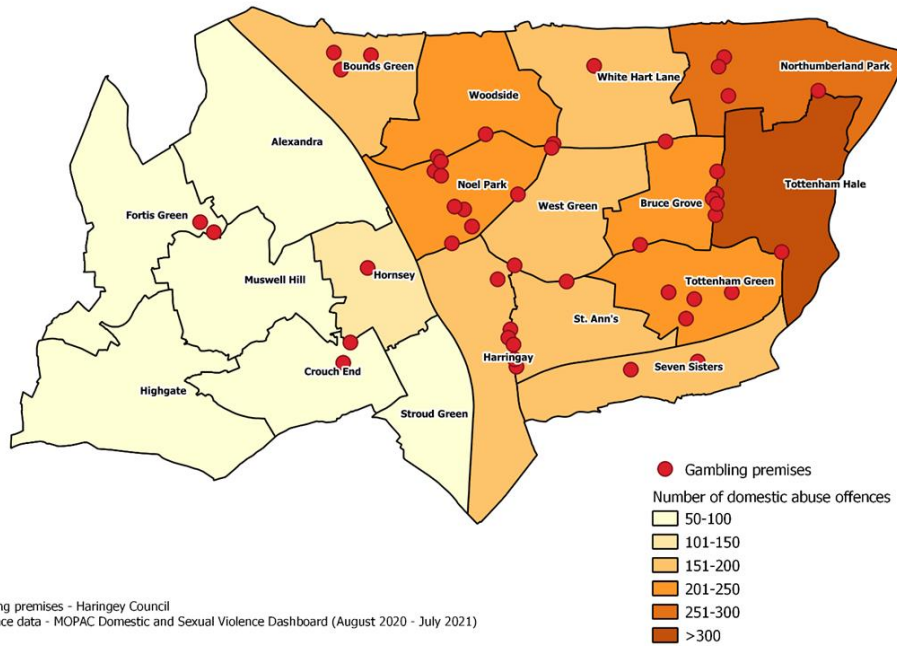
2. Acquisitive crimes August 2020 – July 2021

Although these crimes are not directly linked to the premises, this is to highlight the areas with high crime levels and for the applicant to consider.



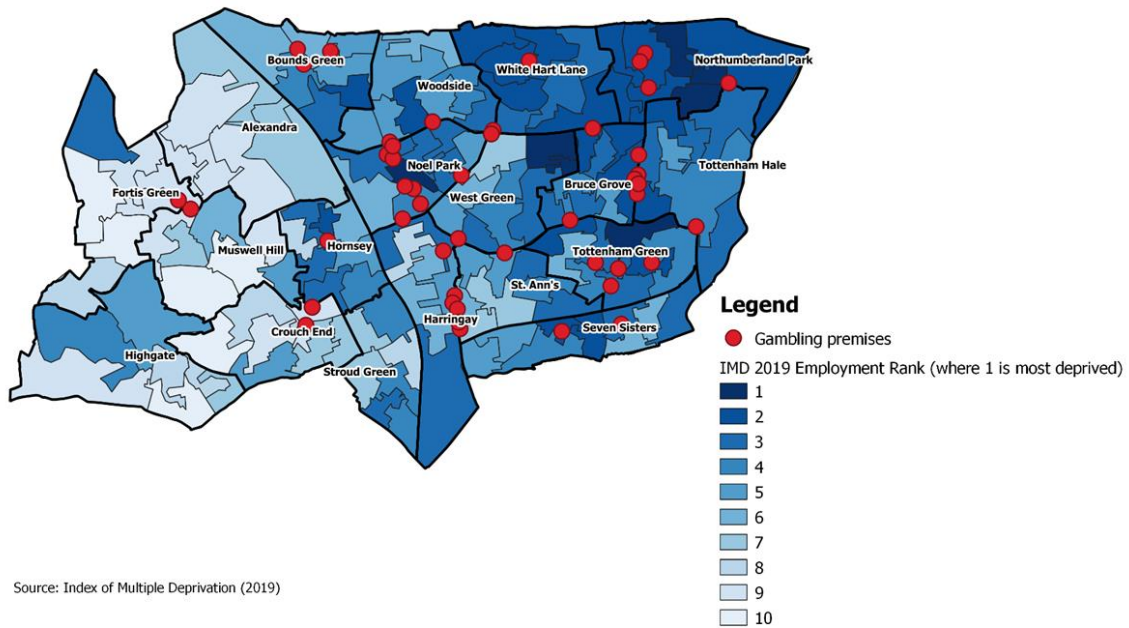
Source: Gambling premises - Haringey Council
Acquisitive Crimes - Metropolitan Police Service Recorded Crimes dataset (August 2020- July 2021)

3. Domestic Violence Offences August 2020 -July 2021



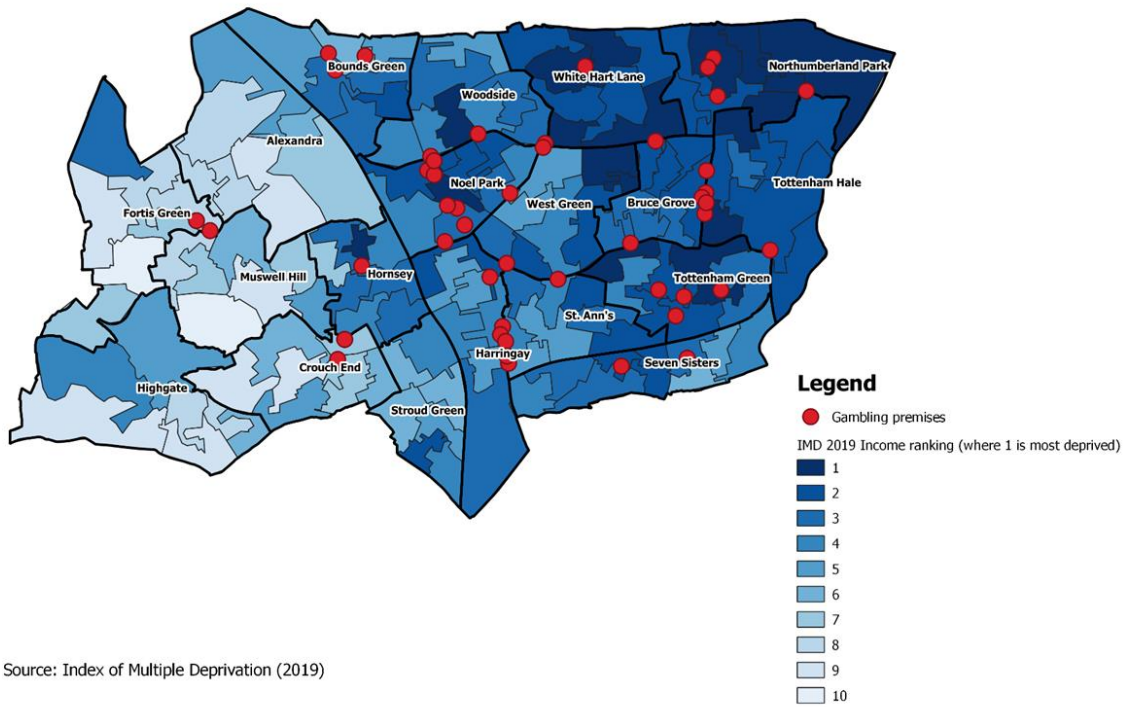
Source: Gambling premises - Haringey Council
 Domestic Violence data - MOPAC Domestic and Sexual Violence Dashboard (August 2020 - July 2021)

4. LSOA's Graded by IMD Employment Scores Showing Ward Boundaries



Source: Index of Multiple Deprivation (2019)

5. LSOA's Graded by IMD Income Scores Showing Ward Boundaries



Source: Index of Multiple Deprivation (2019)